






MTU2

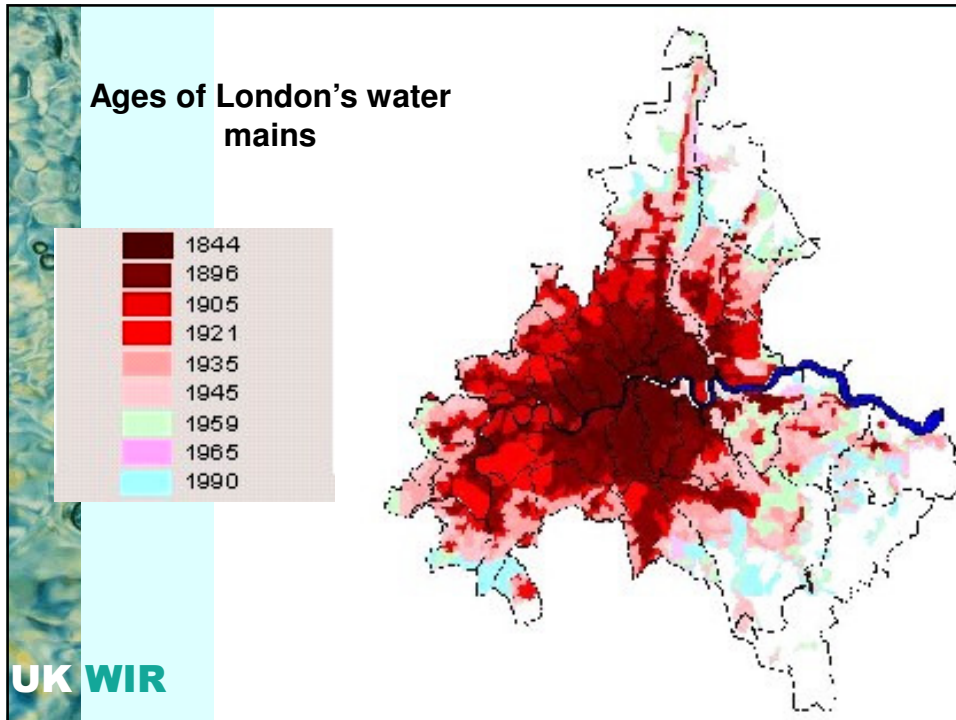
The Industry Viewpoint

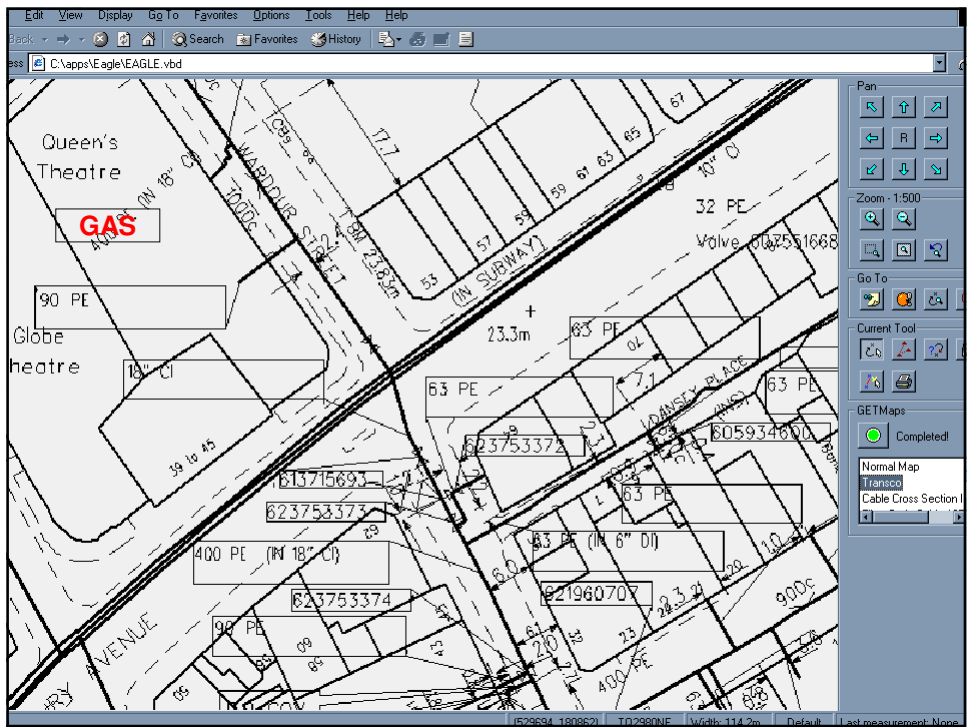
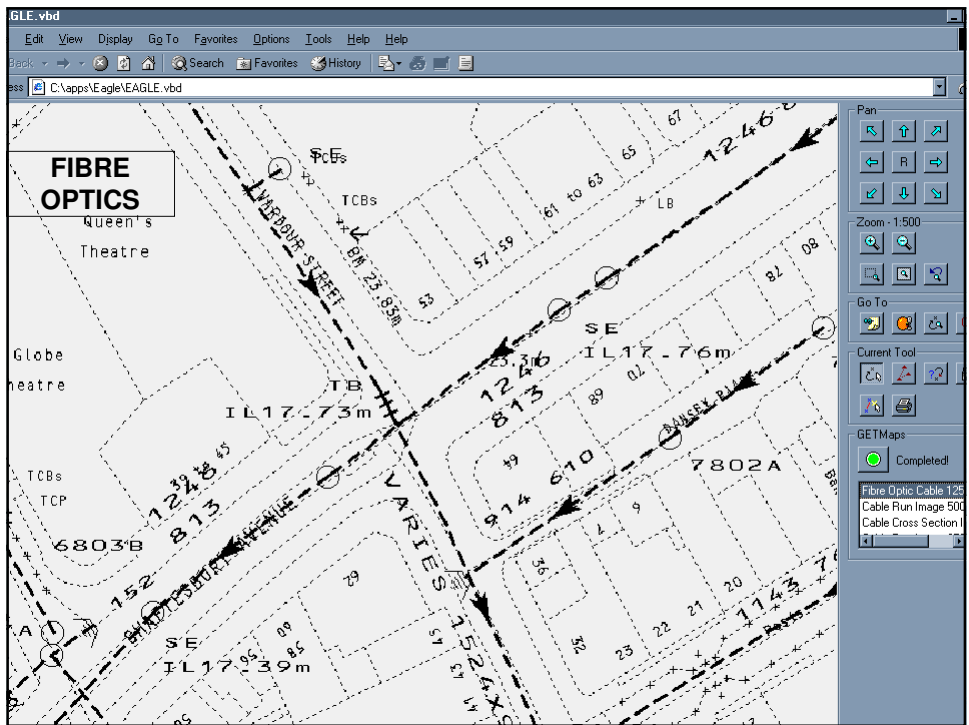
Mike Shepherd
Client Manager – Distribution and Streetworks

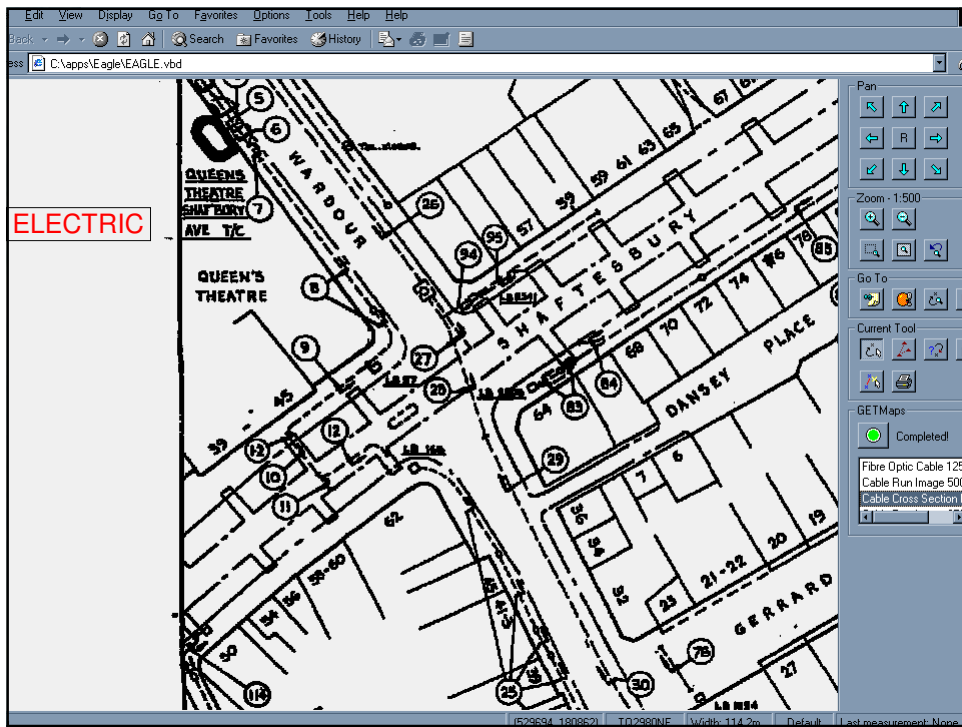
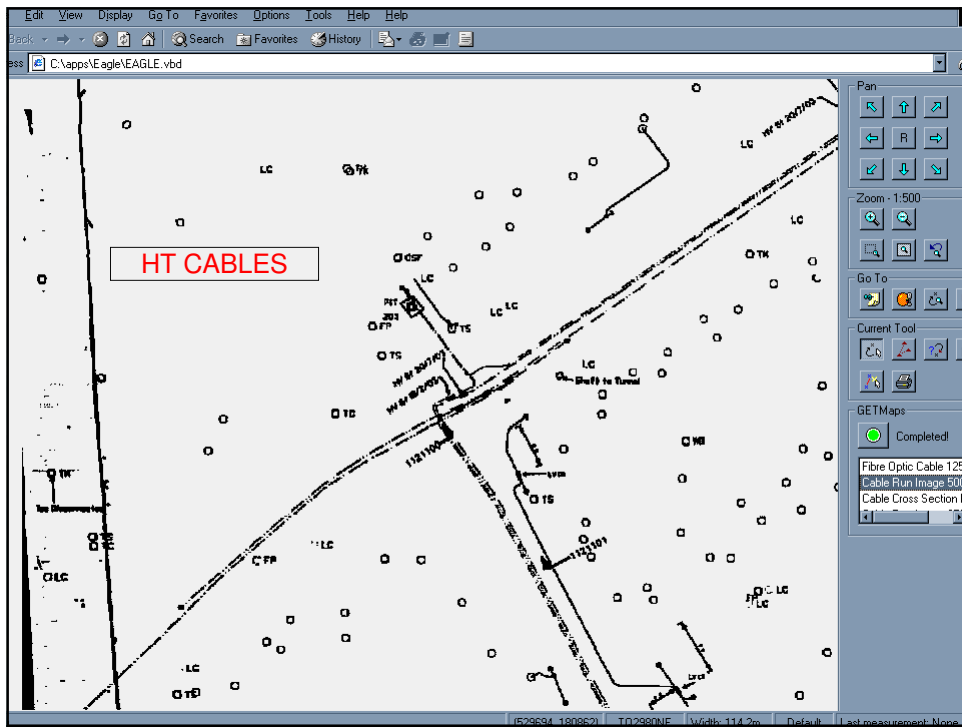


Where did we start?







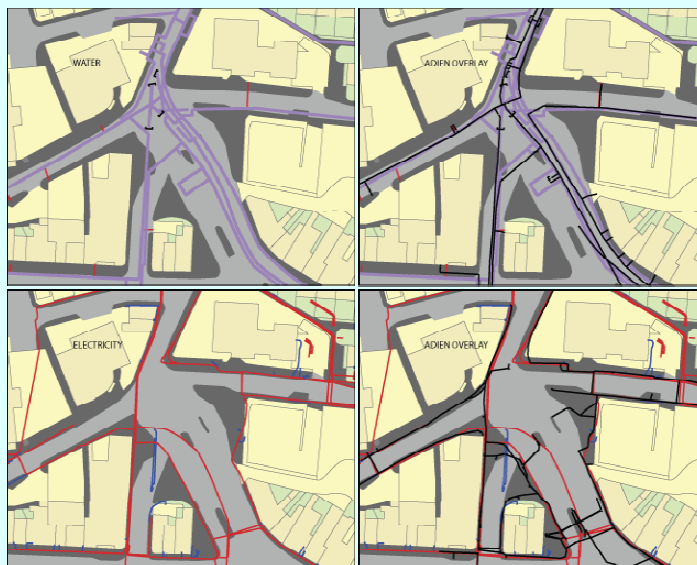


Points to note

- No location dimensions
- 2-D representation only
- No composite picture
- No service connections shown
- A number of utilities missing
 - Cable TV and non BT comms
 - Surface water drainage
 - Street lighting cables
 - Traffic control loops

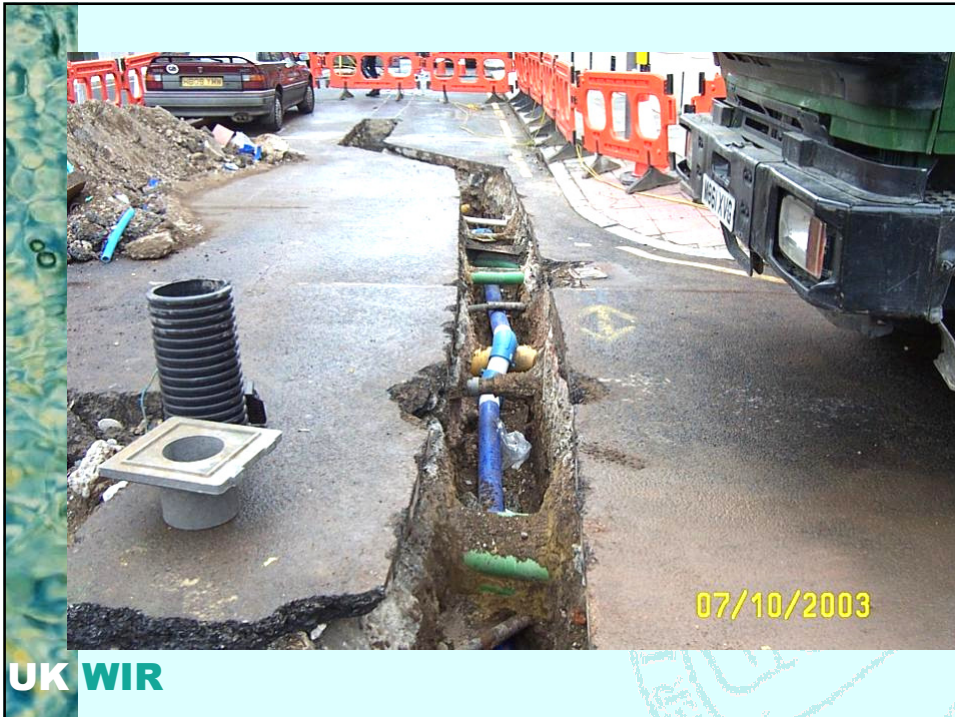
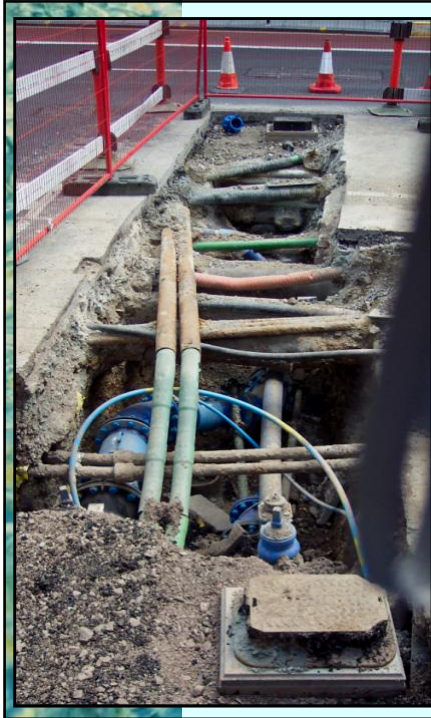
UK WIR

Water



UK WIR

Electricity





The size of the works

- According to sources:
 - Social cost of Utility excavations is £4 billion/yr
 - Water companies dig 500,000 holes/yr
 - Gas, electricity and telecoms dig 250,000/yr each
 - Many jobs take longer than they should because of poor information
 - One job quoted where records show 6 utilities but a further 19 were discovered

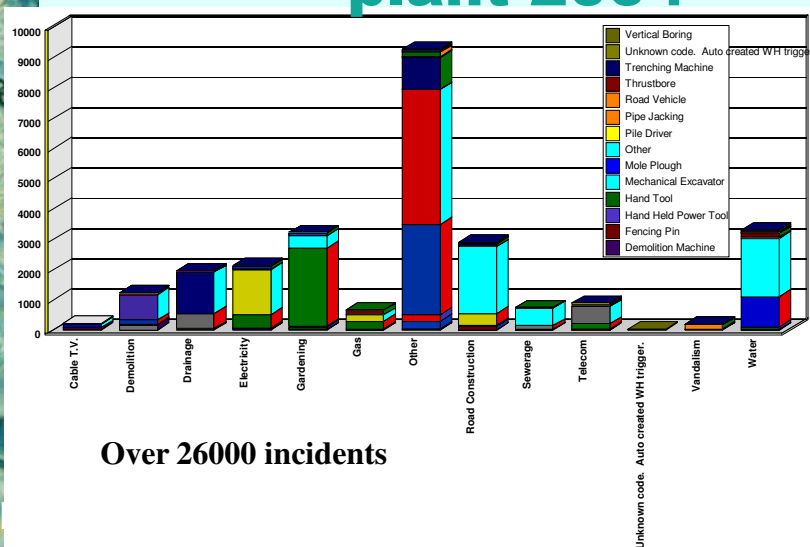
UK WIR

And there are the costs

- Direct costs:
 - TMA Road occupancy costs
 - Repairs and claims
 - Job delays
 - Extra trial hole requirements, particularly for trenchless methods
- Social Costs:
 - Road delays
 - Loss of customer service/revenue
 - Health and safety of the workforce

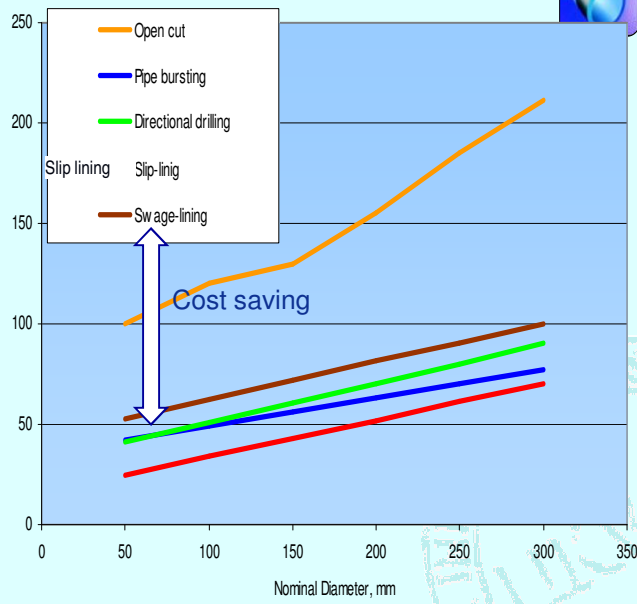
UK WIR

Damage to Transco plant 2004



Over 26000 incidents

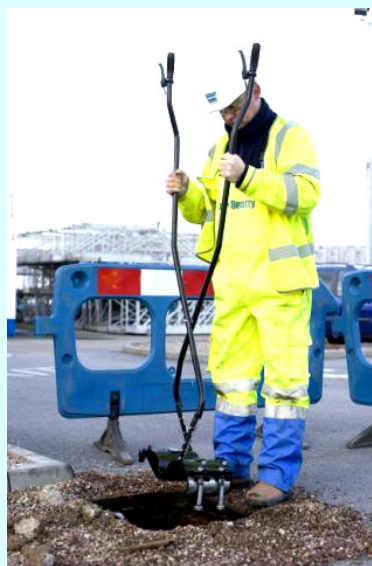
Trenchless installation vs open cut




UK WIR

Keyhole techniques

**Viking Johnson
Easiclump**



UK WIR



What does a successful MTU2 project mean to the industry?

- Step change in carrying out streetworks
- Reduced costs
 - Of work and more efficient ways of working
 - Of road occupancy
 - Of utility strikes
- Reduced disruption
 - To traffic
 - To customers
- Improved asset mapping

UK WIR

